

PLANTA BALDRAME - SALAS
ESCALA _____ 1:50

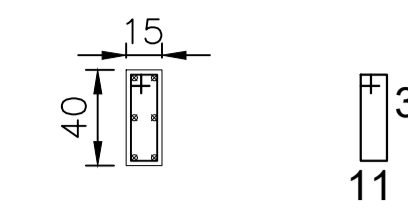
PILAR

NUMERO	LARGURA (M)	COMPRIMENTO (M)	ALTURA (M)	VOLUME (M³)	AÇO CA50 (M)	AÇO CA60 (M)
P1	0,1500	2,7000	0,4000	0,162000	16,200000	18,720000
P2	0,1500	2,7000	0,4000	0,162000	16,200000	18,720000
P3	0,1500	2,7000	0,4000	0,162000	16,200000	18,720000
P4	0,1500	2,7000	0,4000	0,162000	16,200000	18,720000
P5	0,1500	2,7000	0,4000	0,162000	16,200000	18,720000
P6	0,1500	2,7000	0,4000	0,162000	16,200000	18,720000
P7	0,1500	2,7000	0,4000	0,162000	16,200000	18,720000
P8	0,1500	2,7000	0,4000	0,162000	16,200000	18,720000
P9	0,1500	2,7000	0,4000	0,162000	16,200000	18,720000
P10	0,1500	2,7000	0,4000	0,162000	16,200000	18,720000
P11	0,1500	2,7000	0,4000	0,162000	16,200000	18,720000
P12	0,1500	2,7000	0,4000	0,162000	16,200000	18,720000
P13	0,1500	2,7000	0,4000	0,162000	16,200000	18,720000
P14	0,2000	2,7000	0,2000	0,108000	10,800000	13,320000
P15	0,2000	2,7000	0,2000	0,108000	10,800000	13,320000
P16	0,2000	2,7000	0,2000	0,108000	10,800000	13,320000
P17	0,2000	2,7000	0,2000	0,108000	10,800000	13,320000
P18	0,2000	2,7000	0,2000	0,108000	10,800000	13,320000
TOTAL				2,646000	264,600000	309,960000

VIGA BALDRAME

NUMERO	LARGURA (M)	COMPRIMENTO (M)	ALTURA (M)	VOLUME (M³)	AÇO CA50 (M)	AÇO CA60 (M)
V1	0,1500	3,2000	0,4000	0,192000	19,2000	22,1860
V3	0,1500	3,1300	0,4000	0,187800	18,7800	21,7000
V5	0,1500	4,8000	0,4000	0,288000	28,8000	33,2800
V7	0,1500	4,8000	0,4000	0,288000	28,8000	33,2800
V8	0,1500	3,3500	0,4000	0,201000	20,1000	23,2260
V9	0,1500	4,0800	0,4000	0,244800	24,4800	28,2880
V11	0,1500	4,0700	0,4000	0,244200	24,4800	28,2880
V12	0,1500	3,2000	0,4000	0,192000	19,2000	22,1860
V13	0,1500	3,2000	0,4000	0,192000	19,2000	22,1860
V14	0,1500	4,0800	0,4000	0,244800	28,8000	28,2880
V16	0,1500	4,0800	0,4000	0,244800	28,8000	28,2880
V17	0,1500	3,2200	0,4000	0,193200	19,3200	22,3250
V21	0,1500	2,7000	0,4000	0,162000	16,2000	18,7200
V22	0,1500	4,0800	0,4000	0,244800	24,4800	28,2880
V23	0,1500	4,1100	0,4000	0,246600	24,6600	28,4960
V27	0,1500	4,0900	0,4000	0,245400	24,5400	28,2880
V28	0,1500	4,1200	0,4000	0,247200	24,7200	28,4960
V29	0,1500	2,7000	0,4000	0,162000	16,2000	18,7200
TOTAL				3,732600	381,960000	431,249000

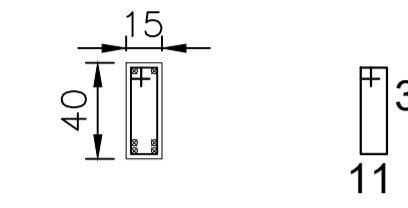
P1 A P13



20 ø5.0 C/15CM C=104

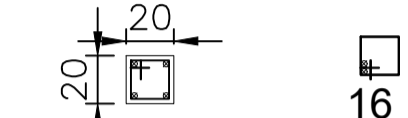
CA60-ø5.0 C=21,6M
CA50-6 ø10.0 C=16,2M

V1, V3, V5, V7, V8, V9, V11, V12, V13, V14, V16,
V17, V21, V22, V23, V27, V28, V29
CA50-6 ø10.0 C=VAR.



CA60-ø5.0 C/15CM C=104


P14 A P18



20 ø5.0 C/15CM C=74

CA60-ø5.0 C=13,32M
CA50-4 ø10.0 C=10,8M

APROVAÇÃO

Responsável Técnico Projeto	Proprietário
Leandro H. Mass Santos Engenheiro Civil Crea PR-170817/D	Vilmar Schmolter Prefeito Municipal
 Prefeitura Municipal de Itapejara D' Oeste CNPJ 76.995.430/0001-52 Estado do Paraná Departamento de Urbanismo Avenida Manoel Ribas, 620, Centro, Cep 85.580-000, Fone (46) 3526 8300 / 8303	
FINALIDADE	
REFORMA DA ESCOLA M. P. V. PARIGOT DE SOUZA	
REFERÊNCIA	PROJETO
PLANTA SALAS - IFRAESTRUTURA	ESTRUTURAL
DETALHES	PRANCHA
ESCALA INDICADA	DATA
	8-jul-22
ARQUIVO	
ESTR PARIGOT 08 07 22.DWG	
DIREITOS AUTORAIS RESERVADOS QUALQUER MODIFICAÇÃO DEVERÁ TER AUTORIZAÇÃO DO DU - ITAPEJARA D'OESTE	